

# NORTHERN CAPE TOURISM

The Northern Cape is scattered with diverse culture, rich frontier history and activities to suit every adrenaline junkie's taste. From hiking and 4x4 adventures to game spotting in unique parks, travellers of all persuasions will unearth a hidden gem here amongst some of the most unique flora in the world.

The Orange River runs through the Northern Cape, bringing life and painting the arid landscape with rich green belts, creating oases and havens for birdlife and other animals. The Kalahari Desert's shifting red sands that once rippled and moved are now mostly stable and home to hundreds of diverse species of flora and fauna.

The famous Kgalagadi Transfrontier Park extends across much of the Kalahari Desert and is a popular attraction for those looking for an escape into the silence of a wide horizons and open spaces interrupted only by the cry of the African fish eagle or roar of a Kalahari Lion.

Photographers, writers and storytellers have all been inspired by the vast and sweeping beauty of the Northern Cape with its big, blue skies, the cascading Au-grabies Falls, mountainous desert of the Richtersveld and star-scattered skies. Come and experience the Northern Cape.

**WHO** Open Africa is a social enterprise with a vision to assist rural entrepreneurs to increase their income and potential to employ more people. It does this by building their capacity to trade and connecting them to travel markets through the creation of tourism routes.

**NEARBY ROUTES**  
 Kokerboom Food & Wine Route  
 Richtersveld Route  
 Kamiesberg & West Coast  
 Diamond Route  
 Karoo Highlands Route

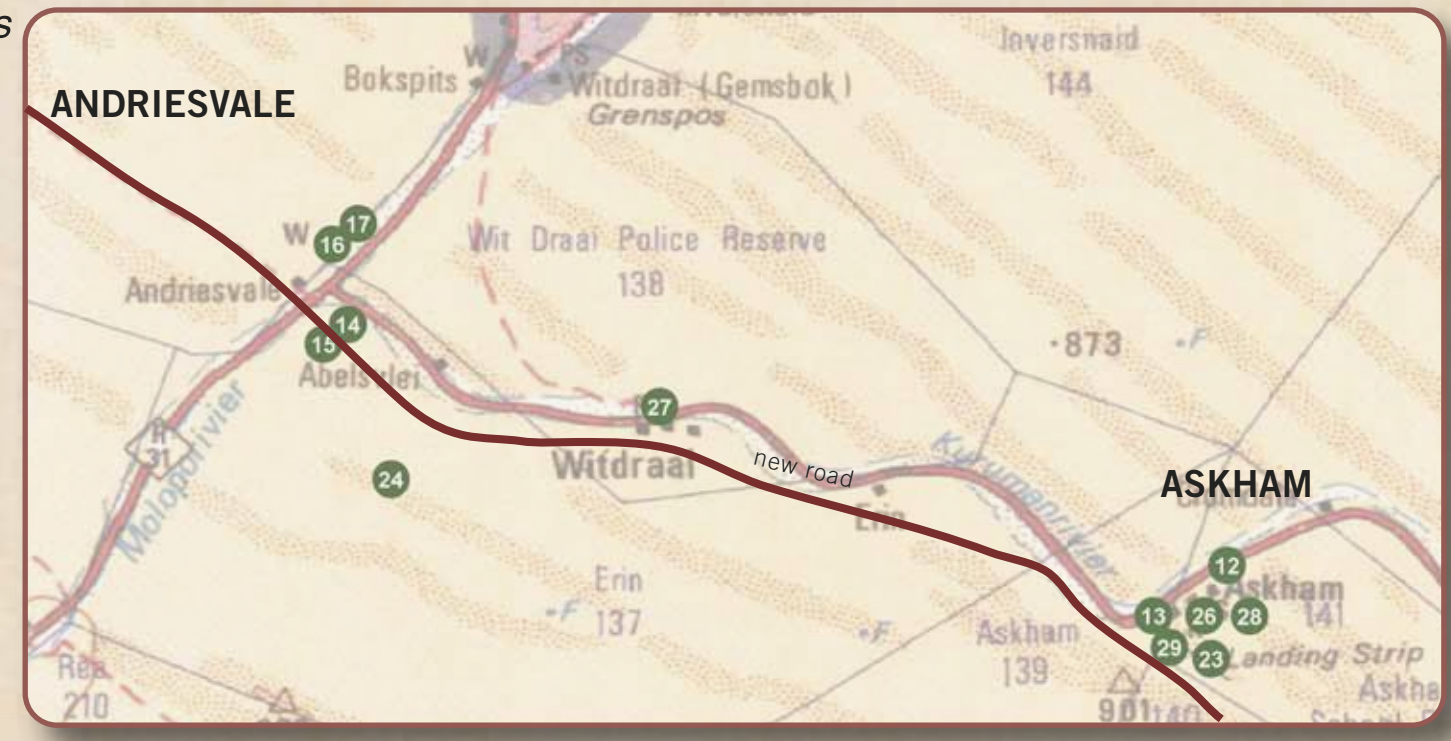
**FOR MORE INFORMATION:**  
[WWW.OPENAFRICA.ORG](http://WWW.OPENAFRICA.ORG)  
 +27 21 683 9639  
[admin@openafrica.org](mailto:admin@openafrica.org)



member of the open africa network

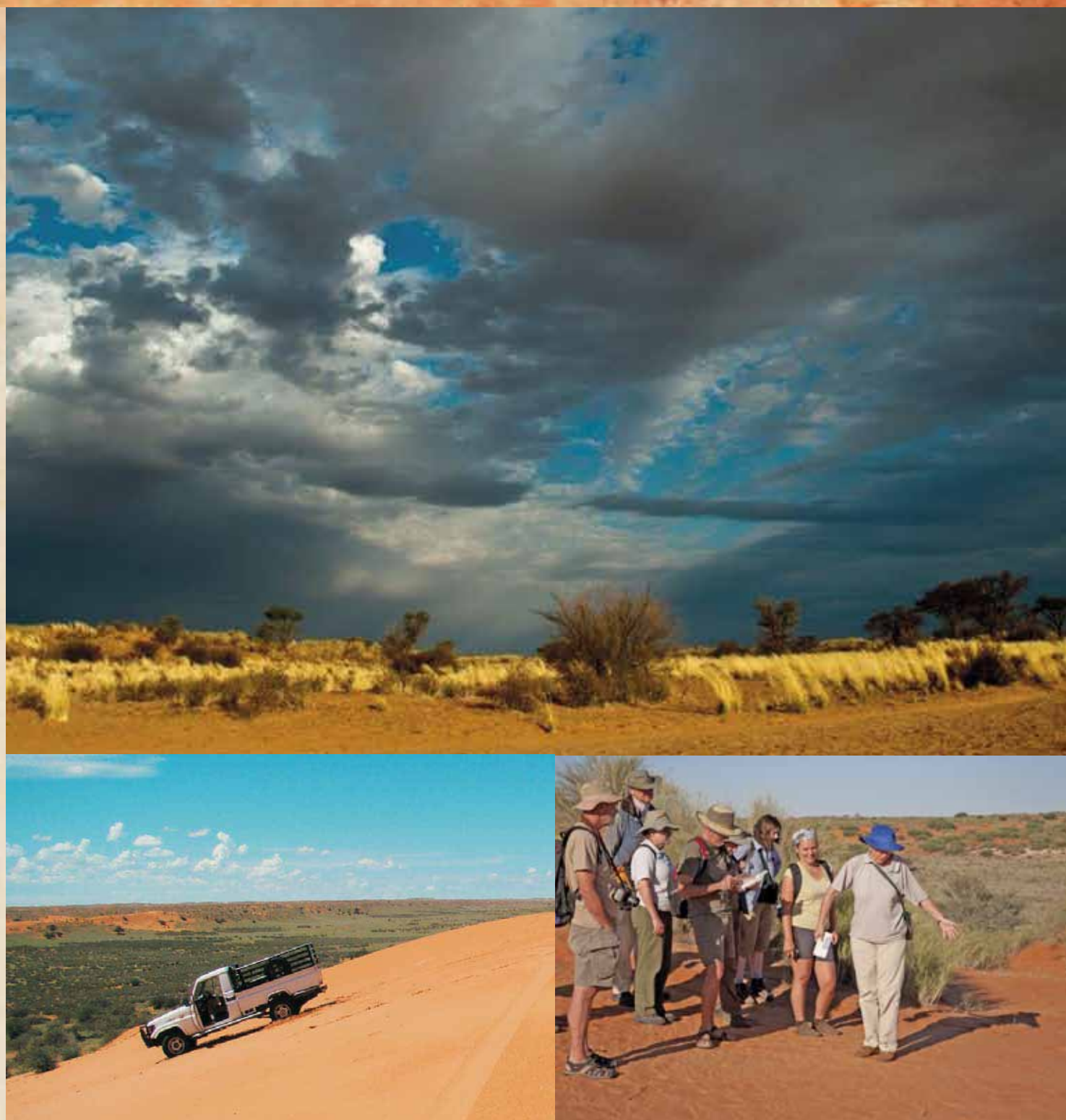


**ENQUIRIES**  
 Retha Stadler  
 Cell: +27 82 492 3469  
[rooiduinroete@hotmail.co.za](mailto:rooiduinroete@hotmail.co.za)



Askham & Andriesvale insert map with route participants and new road

member of the open africa network



## MAP KEY (see over)

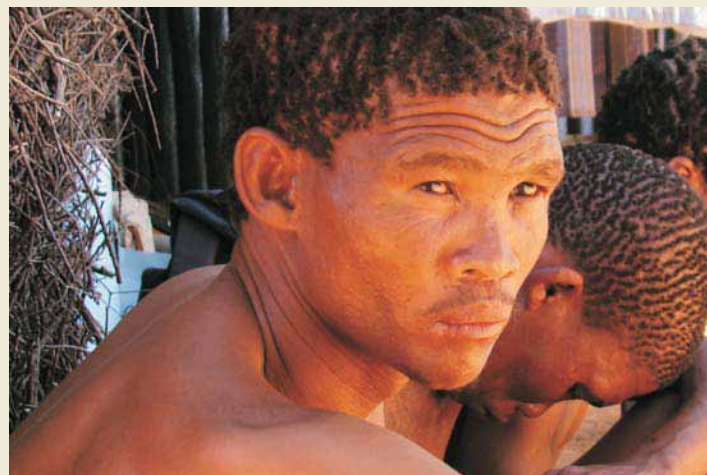
- 1 Kalahari Guest House & Farm Stall
- 2 Rooipan Guesthouse
- 3 Dune Valley Family Chalet
- 4 Loch Maree Guest Farm & Field Camp
- 5 Inkbospan Guest Farm
- 6 Rea Bush Camp and Guesthouse
- 7 Klipkolk Guesthouse
- 8 **i** Kalahari Info and Tented Camp
- 9 Vischgat Game Lodge
- 10 Loch Broom Paradys Lodge
- 11 Murray Guest Farm
- 12 Kalahari Sands Guesthouse
- 13 Askham Post Office Guesthouse
- 14 Boesmansrus Grass Huts
- 15 Aunt Koera's Farm Kitchen
- 16 Molopo Kalahari Lodge
- 17 Khomani San Information Office
- 18 Kalahari Trails Nature Reserve
- 19 Rooiduin Guest Farm
- 20 Kgalagadi Lodge
- 21 **i** Kgalagadi Transfrontier Park
- 22 !Xaus Lodge
- 23 Askham Chalets
- 24 Erin Game Farm
- 25 Imbewu Camp
- 26 Kalahari Camelthorn Caravan Park
- 27 Witdraai Bush Camp
- 28 **i** Kalahari Supermarket
- 29 **i** Diamond T Coffee Shop

# RED DUNE ROUTE

It is said that no two visits to the Kalahari are the same. This ancient and beautiful land is not only amazingly rich in diversity; it also reflects an endless variety of moods, making each new encounter refreshingly different from the previous ones

The Kalahari Red Dune Route showcases the Kalahari through a wide range of activities including duneboarding, quad biking and 4x4 trailing for the adventurous, and game drives, guided walks, birding expeditions and other eco-inclined activities for nature-lovers. For visitors attuned to culture and history, the Kalahari Red Dune Route offers the opportunity to experience regional customs and folklore, sample traditional cuisine, and meet the warm and welcoming people of the Kalahari (a glossary of common local words and terms can be found below to assist you during your visit). Accommodation options are as diverse as the landscape, and vary from camping to homely bed and breakfasts to luxury lodges. All in all, the Kalahari Red Dune Route offers something for everyone.

The area covered by the route extends north of Upington in the Northern Cape province of South Africa into the toe-shaped protrusion of South Africa to the Namibian border. The route incorporates the first formally declared Transfrontier Conservation Area in Africa, the Kgalagadi Transfrontier Park. This park straddles the South Africa-Botswana border and is one of the largest conservation areas in the world.



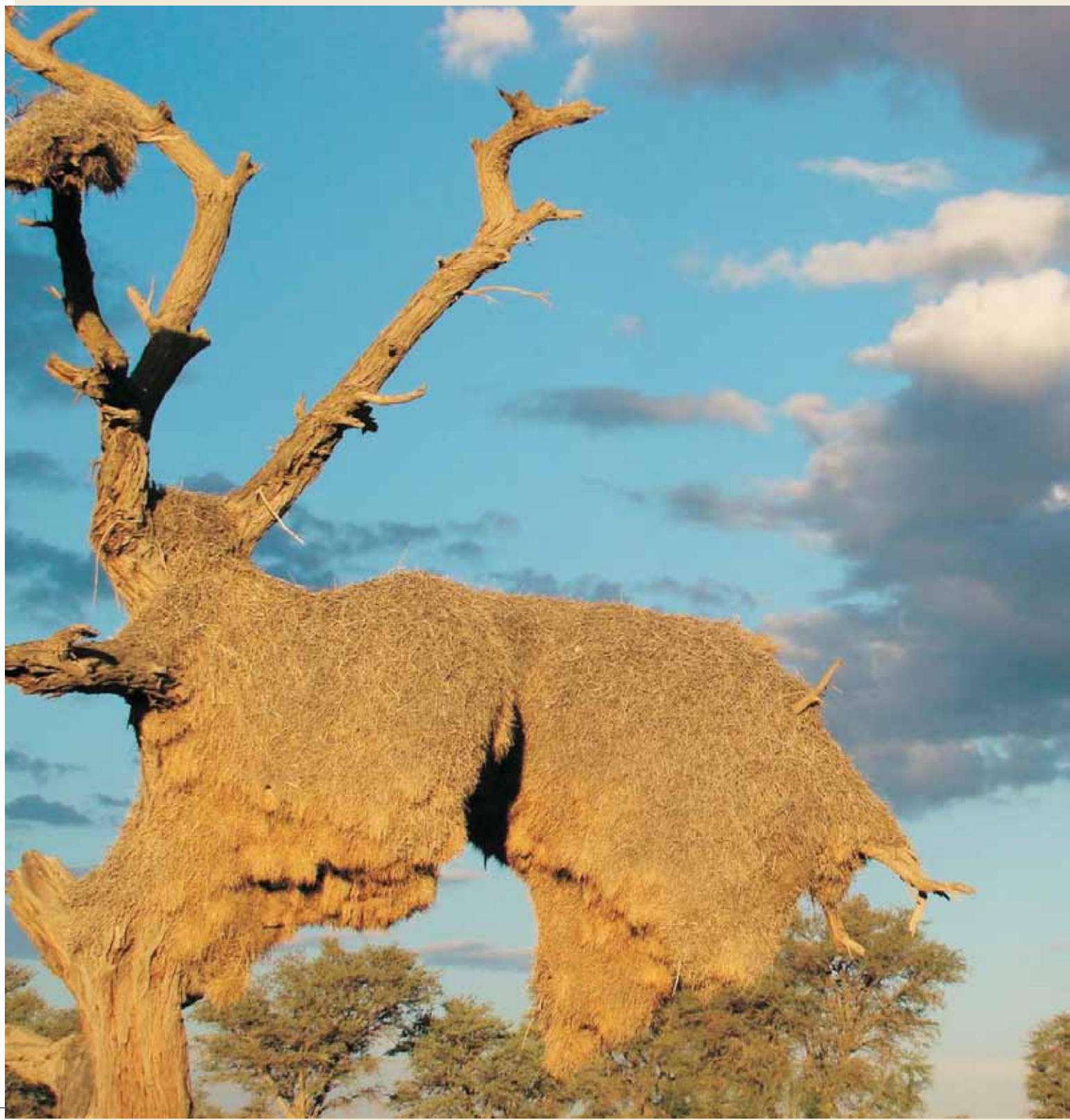
- 01 Kalahari Guest House & Farm Stall**  
GPS: 28.059719°; E 21.02575°  
This is the only farm stall on the R360 from Upington towards the Kgalagadi Transfrontier Park, where travellers can buy Kalahari lamb, boerewors, biltong and interesting curios. Accommodation is available in the form of a lovely bush camp.  
Contact: Riana Loots  
Mob: +27 73 194 2864  
Email: kalahariquesthouse@webmail.co.za
- 02 Rooipan Guesthouse**  
GPS: 27.49489°; E 20.77742°  
The perfect interlude for overnight accommodation on the R360 - halfway between Upington and the Kgalagadi Transfrontier Park.  
Contact: Lizette Knoetze  
Mob: +27 82 415 1579  
Email: rooipan@gmail.com
- 03 Dune Valley Family Chalet**  
GPS: 27.208167°; E 20.751194°  
A self-catering house that sleeps up to eight people set in amongst the dunes. Lights are solar-powered and the geyser is gas. The house is fully-equipped with outside braai (barbecue) facilities. A 4x4 vehicle is required to reach the house and no electricity is available.  
Contact: Magda van Schalkwyk  
Mob: +27 84 557 0684  
myfourie@gmail.com
- 04 Loch Maree Guest Farm & Field Camp**  
GPS: 27.116472°; E 20.497972°  
Offers accommodation in a fully-equipped field camp, family suite and camping at the bush camp. Sundowners can be enjoyed on the salt pan tucked between the dunes or you can enjoy a unique 4x4 experience with your hosts.  
Contact: Retha Stadler  
Mob: +27 82 492 3469  
Email: lochmaree@absamail.co.za
- 05 Inkbospan Guest Farm**  
GPS: 26.9469°; E 20.2243°  
Enjoy the wide open spaces, big skies and silence. Located approximately 78km from the Kgalagadi Transfrontier Park. It offers two basic units without electricity.  
Contact: Landa Conradie  
Mob: +27 82 336 9110 or +27 83 564 4613  
Email: ikoppieskraal@gmail.com
- 06 Rea Bush Camp & Guesthouse**  
GPS: 26.986306°; E 20.616694°  
Lovely accommodation with a lapa on the premises. The dry Kuruman River flows through the farm, lined with old Camelthorn trees.  
Contact: Nicolene Knoetze  
Mob: +27 83 313 1044  
Email: nnknoetze@webmail.co.za

- 07 Klipkolk Guesthouse**  
GPS: 26.980917°; E 20.100667°  
Accommodation with breakfast, lunch and dinner served on request.  
Contact: Dennis & Gladys Britz  
Mob: +27 76 103 7472 or +27 71 472 0212  
Email: gladys.britz@vodamail.co.za
- 08 Kalahari Info and Tented Camp**  
GPS: 26.74805°; E 20.014117°  
Offers accommodation in 10 fully equipped tented camps.  
Contact: Gertruida Bott  
Mob: +27 72 159 6726 or +27 73 805 9469  
Email: info@miertourism.co.za
- 09 Vischgat Game Lodge**  
GPS: 27.121833°; E 21.250333°  
Accommodation in family suite chalets. The chalets are fully-equipped for self-catering and offer a private, relaxed atmosphere.  
Contact: Jean Lambrechts  
Tel: +27 54 333 1126  
Mob: +27 79 583 5475  
Email: nclodge@webmail.co.za
- 10 Loch Broom Paradys Lodge**  
GPS: 27.035417°; E 21.069639°  
A unique and affordable experience in the Kalahari that is comfortable and luxurious.  
Contact: Maryke Barlow  
Mob: +27 84 491 9354  
Email: bookings@lochbroom.co.za
- 11 Murray Guest Farm**  
GPS: 26.98508333°; E 20.8665°  
Accommodation in fully-equipped self-catering chalets as well as in a field camp.  
Contact: Minette & Susan Rossouw  
Mob: +27 82 547 1655 or +27 82 333 3291  
Email: minnetter@vodamail.co.za
- 12 Kalahari Sands Guesthouse**  
GPS: 26.980083°; E 20.782222°  
Offers accommodation in seven self-catering chalets.  
Contact: Hannelie van der Westhuizen  
Mob: +27 82 371 4549  
Email: vanderw@lantic.net
- 13 Askham Post Office Guesthouse**  
GPS: 26.9813°; E 20.780494°  
Accommodation options are three en-suite rooms or a family cottage that sleeps up to six people. Both options have a fully-equipped kitchen, lounge, roof fans and private braai (barbecue) facilities.  
Contact: Johanna du Toit  
Tel: +27 54 511 0025  
Mob: +27 82 494 4520  
Email: askham@mweb.co.za

- 14 Boesmansrus Grass Huts**  
GPS: 26.944123°; E 20.663261°  
Boesmansrus Grass Huts is located a few kilometres outside Askham and offers a traditional San homestay experience.  
Contact: Barbara Raats  
Mob: +27 74 839 1623 or +27 78 328 0578  
Email: bonaraats@gmail.com
- 15 Aunt Koera's Farm Kitchen**  
GPS: 26.944111°; E 20.663022°  
Visit us on the R360 between Askham & Andriesvale (near Khomani San's Bush Camp with camping facilities) for fresh 'roosterkoek' and traditional cuisine before visiting the Heritage Museum.  
Contact: Magdalena Steenkamp  
Mob: +27 83 588 8346
- 16 Molopo Kalahari Lodge**  
GPS: 26.932314°; E 20.6623°  
Accommodation in 40 air-conditioned chalets as well as a campsite.  
Contact: Reinhardt Lambrechts  
Tel: +27 54 511 0008  
Mob: +27 73 825 8704  
Email: namrod13@lantic.net
- 17 Khomani San Information Office**  
GPS: 26.93883°; E 20.664°  
Guided nature and heritage trails with San guides and trackers.  
Contact: Luce Steenkamp  
Mob: +27 76 613 9095  
Email: bushmancouncil@khoromanisan.com
- 18 Kalahari Trails Nature Reserve**  
GPS: 26.773944°; E 20.631639°  
A private reserve where guests are welcome to explore the farm on foot. This is also the official Meerkat Sanctuary for the Northern Cape. A dune-side bush camp is also available with four permanent two bed tents, ablution facilities and kitchen. A sheltered campsite with ablutions block, kitchen, lapa and braai (barbecue) is located close to the guesthouse, which sleeps up to 12 people.  
Contact: Anne Rasa  
Tel: +27 54 511 0900  
Mob: +27 72 277 2377  
Email: kalahari.trails@intekom.co.za
- 19 Rooiduin Guest Farm**  
GPS: 26.743278°; E 20.626861°  
Situated near Kgalagadi Transfrontier Park. Comfortable accommodation and a large campsite is available. Activities on the farm include hiking, 4x4 dune driving and sand-boarding.  
Contact: Aida Mouton  
Mob: +27 81 314 1544 or +27 82 589 6659  
Email: emmericias@gmail.com

- 20 Kgalagadi Lodge**  
GPS: 26.524089°; E 20.602761°  
Situated 5km from the Twee Rivieren Rest Camp at the entrance to the Park and offers accommodation in 26 chalets, most of which are full S/C units with DSTV (selected channels) and air-conditioning. 19 camp sites are available. A shop for supplies is available on site.  
Contact: SJ Koozzen  
Mob: +27 82 303 8768 or +27 83 225 0331  
Email: info@kgalagadi-lodge.co.za
- 21 Kgalagadi Transfrontier Park**  
GPS: 26.47432778°; E 20.61558611°  
The first official Transfrontier Conservation Area in Africa. It offers various accommodation options including traditional rest camps for visitors.  
Contact: Ben van Eeden  
Tel: +27 54 561 2000/2050  
Mob: +27 83 326 8967  
Email: ben.vaneeden@sanparks.org
- 22 Xaus Lodge**  
GPS: 26.150083°; E 20.256533°  
Offers 4-star fully inclusive accommodation in 12 luxury chalets inside the Kgalagadi Transfrontier Park.  
Contact: Elmaré Wykerd  
Tel: +27 21 701 7860  
Email: info@xauslodge.co.za
- 23 Askham Chalets**  
GPS: 26.983667°; E 20.783611°  
Askham Chalets offer peace, tranquility and a true Kalahari experience in secluded and secure cottages, which have two bedrooms equipped with 3/4 beds, one bathroom a fully-equipped kitchen and braai (barbecue) facilities outside on the deck.  
Contact: Banna and Aletta  
Mob: +27 82 774 9076 or +27 82 443 1616  
Email: askham.chalets@gmail.com
- 24 Erin Game Farm**  
GPS: 26.96478°; E 20.67042°  
A beautiful traditional farm, stocked with springbok, gemsbok, red hartebeest, blue wildebeest, giraffe and iconic eland, which is of symbolic value to the San. Guided walking trails with #Khomani San and game drives are available. A picturesque tented camp has recently been constructed offering accommodation for 16 people.  
Contact: Luce Steenkamp  
Mob: +27 76 613 9095  
Email: bushmancouncil@khoromanisan.com

- 25 Imbewu Camp**  
GPS: 26.395781°; E 20.48122°  
For those seeking a simpler interaction with the Kalahari desert and its people and that enjoy 'roughing it' a little, it is possible to enter the contract Park through the community's gate and to overnight at the Imbewu Camp. It is necessary to take a #Khomani San guide with you when you enter the Park.  
Contact: Luce Steenkamp  
Mob: +27 76 613 9095  
Email: bushmancouncil@khoromanisan.com
- 26 Kalahari Camelthorn Caravan Park and B&B**  
GPS: 26.981806°; E 20.782194°  
Offers accommodation in chalets (sleeps 4), as well as five camping sites, each with their own shade, power point, water and braai (barbeque) area. There are two ablution facilities.  
Contact: Rene and Tobie  
Mob: +27 82 330 6762 or +27 72 437 6969  
Email: kalahariacamelthorn@gmail.com
- 27 Witdraai Bush Camp**  
GPS: 26.954768°; E 20.707568°  
The bush camp is situated on the traditional farm Witdraai and is a rustic facility, designed to give one the feel of living in a Bushman village, with the option to stay in grass huts (four) or to camp. It is serviced by an ablution block with simple showers and toilets.  
Contact: Vinkie  
Mob: +27 72 977 0120  
Email: vinkie84@gmail.com
- 29 Diamond T Coffee Shop**  
GPS: 26.98014°; E 20.78089°  
Here travellers can enjoy the best coffee shop drinks and home-baked goods, freshly prepared by the owners.  
Contact: Cilla and Johanna du Toit  
Tel: +27 54 511 0025  
Mob: +27 82 494 4520 / +27 82 496 9941  
Email: askham@mweb.co.za



## LOCAL EVENTS

### Kalahari Desert Festival

Every year around March the #Khomani San and Mier community come together to host the Kalahari Desert Festival. The festival showcases traditional dance and music as well as diversity within the Kalahari.  
Contact: Luce Steenkamp  
Mob: +27 76 613 9095  
Email: bushmancouncil@khoromanisan.com

### Woestyntrop Annual Cycle Ride

Every July around 50 cyclists ranging in age from 7 to 75 years old take to the R360 road between Askham and Upington in the Southern Kalahari for the annual Woestyntrop cycle ride. For three days they roam over the dunes and through the 'hardeveld' and for three nights they sleep in tents at various spots along the road - a pan, an 'oasis' and a game farm. Woestyntrop is one in its kind as it is designed for all people wanting to enjoy nature, good Kalahari food, cultural exchanges and the other bests the Kalahari can offer from the seat of a bicycle. It is not for competitive cyclists as all receive a medal when completing the race.  
Contact: Betta Steyn  
Tel: +27 82 093 0801  
Email: bettasteyn@lantic.net or sandvrou@gmail.com

## TRAVEL INFORMATION

**Climate and weather** The Kalahari is a desert. Daytime temperatures can be extremely high and sunblock is essential, especially for those with sensitive skins. In winter, night-time temperatures can drop below 0°C (though the days are usually warm and pleasant). Thunderstorms are common during the rainy season between November and April.

**Malaria** The Kalahari is malaria-free. However, in the event of high seasonal rains it is advisable to take the usual precautions.

**Distances and roads** The distances that you will travel in the Kalahari are large. Most vehicles are suitable for travel in the area, provided you stay clear of the dunes. Four-wheel drive vehicles are advisable for game drives, thanks to their higher ground clearance. Remember that speeding on dirt roads is particularly dangerous. It also creates a great deal of dust, which can adversely affect people, plants and animals in the vicinity of roads.

**Transport** The town of Upington has direct daily air links with Johannesburg and Cape Town, as well as coach services connecting all the major centres in South Africa and Namibia. Car hire (including 4x4) is available at the airport.

**Finances** Many shops in the smaller towns along the Kalahari Red Dune Route accept only cash. Furthermore, there are few banks and automated teller machines in the area covered by the route. Thus it is advisable to do all banking in Upington and to draw enough cash to cover the entire journey.